



→ YOUR HOME ON THE WATER

The “Flâneuse du Nil” a cruise on board a dahabieh



| 4



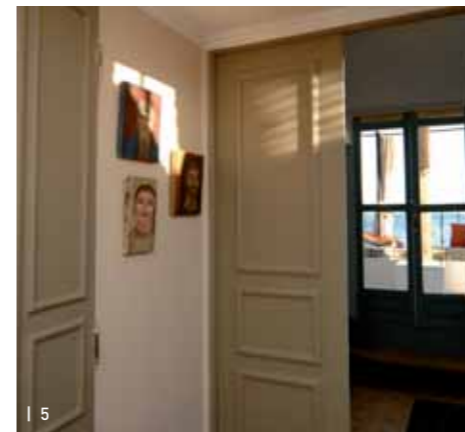
| 1



| 2



| 3



| 5



| 6



| 7

© F. GUÉNET

The dahabieh is used for cruising languorously on the Nile, in traditional fashion. Flanked by two lateen sails, this boat takes on the gentle rhythm of the river where the breeze often goes against the currents, and can access tranquil banks that larger boats cannot. Seduced by the charm of this type of cruise that offers both a privileged discovery of the banks of the Nile as well as a unique view of the daily life of the river-king, we decided to design our ideal dahabieh: the “Flâneuse du Nil”. You will enjoy visiting the sites during off-peak hours, sharing meals around a wood fire on the lush green banks of the Nile, the Flâneuse du Nil offers the undeniable charm of your home away from home, your home on the water.

The assets of the “Flâneuse du Nil”

With a sober and tasteful decor, and priority given to on-board comfort, the size of the rooms and common areas provide breathing space, a sense of well-being, and the opportunity to experience this adventure in total privacy by booking all 7 cabins on the boat. As its name suggests, with the ‘Flâneuse du Nil’ your cruise is a gentle one, as you are slowly rocked by the languid rhythm of the river. Our team ensures total comfort during your trip and a French-speaking guide reveals all the subtleties of ancient Egypt throughout all excursions. Before retiring to your cabin for the night, you will dine around a wood fire improvised on an island or one of the lush green banks of the Nile.

Life on board your dahabieh

The “Flâneuse du Nil” accommodates 7 cabins (including a rear suite with balcony) and a spacious sitting-room with board games, books and CD-DVD players. A vast sun-deck, shaded by a velum, awaits you for lazy moments while you contemplate the splendours of the Nile banks. Built in 2006, the boat has all the modern comforts, including most notably individual air conditioning and private rest rooms in each cabin. Everything is included on board: meals, soft drinks and guided visits. Our chef provides the finest Egyptian cuisine adapted to sensitive stomachs and children. You will not want to miss his delicious concoctions with

hibiscus flowers, the famous ‘carcadet’, to be sipped slowly on the deck, nose to the wind... Our crew consists of eight men dressed in the traditional “galabiya”, navigating in the ancient fashion. For cruising, just two concessions have been made to “modernity”: a tug-boat in the event of a calm and an electric generator. For safety reasons, the dahabieh is not accessible to children under 7 years old.


1 à 3 | Crew manoeuvres
4 et 6 | The Siwa suite
and its private deck
5 | Common areas
7 | Cabin



1



4

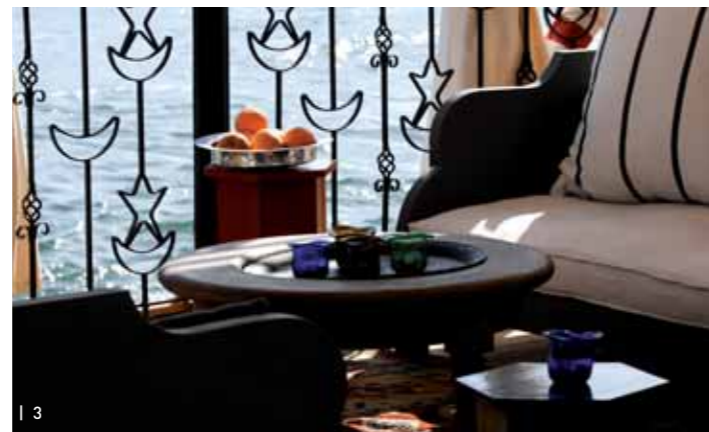


The Flâneuse du Nil and sustainable development

- The Flâneuse du Nil is sail-propelled for 70% of the trip.
- Water is drawn from the Nile, filtered, treated and kept under pressure in tanks. Waste water is also treated.
- Clients and crew drink bottled water.
- Refuse is sorted : Cardboard, paper and wood are burned, plastics and metals are disposed of in special containers.
- The banks of the Nile approached by the dahabieh are cleaned regularly by the crew.
- All food is purchased on site in the villages.
- We are working on a solution to produce hot solar water to cover 80 % of our needs.
- The salaries of the crew are double those generally practiced in Egypt on cruise ships and we offer a system of bonuses based on the number of travellers on board.
- We provide our crew members with health and social coverage.



2



3



5



6

© F. GUÉNET

- 1 et 5 | Sun-deck
- 2 | Detail of the stairs
- 3 | Sitting room on the deck
- 4 | The Flâneuse du Nil
- 6 | Inside sitting room

6 day / 5 night cruise with departure from Luxor

D1 - Luxor / Boarding the "Flâneuse du Nil"

Departure around 8h30 to explore the temples of Karnak and Luxor. Lunch. Departure in convoy to Esna, home port for the dahabieh. Cruise and arrival late afternoon at El Hegz. Dinner and night on board.

D2 - El Hegz / El Kaab / Edfu / El Ramady

Cruise to El Kaab. Built within a mud brick enclosure during the period 747-332 BC, this town was reportedly founded during the Neolithic era.
To be visited: The tombs hewn in the sheer rock of the

mountainside (Ahmès, Paheri). Resume cruise and dinner on board. Throughout the cruise, you will see feluccas, fishermen, and sandales loaded with sugar cane... Stopover at Edfu to visit the sacred temple of the God Horus, one of the largest and best-preserved temples in Egypt. Reboarding and cruise to the island of El Ramady.

D3 - El Ramady Island / Djebel Silsileh / Maniha

Cruise to Djebel Silsileh placed under the protection of the God Hapy. On the western bank of the river emerges a sanctuary dug into the rock dedicated by Pharaoh Horemheb to the seven divinities of the South.

Exploration on foot of the ancient quarry where the sandstone was dug for temple construction. Reboarding and cruise to the island of El Maniha.

D4 - Island of Maniha / Kom Ombo / Daraw / Herdiab

Cruise and visit to the Greco-roman site of Kom-Ombo, very picturesque with its promontory plunging over the Nile. Shared by the two Gods Sobek the crocodile and Horus the falcon, this temple is testament to a perfect and symmetrical architecture.
Cruise to Daraw and visit to its popular market where colours, spices and perfumes draw you into the heart of Africa and the Orient.
Reboarding and cruise to Herdiab.

D5 - Herdiab / El Koubaniya / Aswan

Stroll through the narrow streets of the Nubian village of El Koubaniya.
Reboarding and cruise to Aswan. Arrival and visit of the Philae temple, dedicated to Isis, universal mother and wife of Osiris. Its bas reliefs, frescos and chapiters make it one of the most beautiful sanctuaries in Egypt.
Night on board in Aswan.

D6 - Aswan

Disembarking and transfer after breakfast.

